

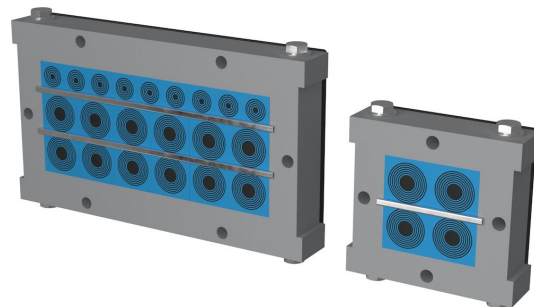


Brtvai Roxtec CRF

Za kabele ili plastične cijevi u željezničkim vozilima.

Brтва Roxtec CRF dizajniran je i ispitan za primjene u željezničkim vozilima. Lagani aluminijski okvir može se otvoriti za jednostavniju početnu ugradnju i naknadnu ugradnju kada je potrebno dodati ili zamijeniti kabele ili plastične cijevi. U okvir je moguće ugraditi brtvene module Roxtec CM ili CM PPS sa značajkom Multidiameter™ za prilagodljivost dimenzijama kabela ili module Roxtec CRF ili CRF PPS za brzu serijsku ugradnju kada su veličine kabela poznate. Verzije PPS dviju vrsta modula pružaju protupožarnu zaštitu za primjene u plastičnim cijevima.

- Lagano
- Površinski učinkovito



Karakteristike proizvoda



Vatrootpornost



IP/UL NEMA

Struktura instalacije



Ormari i kućišta

Klase i certifikati

Požar

- Razred E/EI u skladu s normom EN 45545 E30
- HL3 prema EN 45545-2 (R22, R23)

Nepropusnost

- IP 66 prema IEC 60529

Podržava

- Kategorija udara i vibracija 2 prema IEC 61373

Dimenzije okvira

mm/kg

Varijante okvira u nastavku ograničen su izbor. Za cijeli raspon okvira i konfiguracija posjetite [roxtec.com](https://www.roxtec.com).

| Proizvod | Otvori okvira | Prostor za smještaj | Vanjske dimenzije WxHxD | Dimenzije otvora w x h | Težina | Broj artikla |
|---------------------|---------------|---------------------|-------------------------|------------------------|--------|--------------|
| CRF 60x60 ANODIZ | 1 | 60 x 60 | 108 x 112 x 35 | 70(+0/-0) x 60(+0/-0) | 0.73 | 214613 |
| CRF 80x160 ANODIZ | 1 | 160 x 80 | 208 x 142 x 35 | 170(+0/-0) x 80(+0/-0) | 1.27 | 214622 |
| CRF 80x180 ANODIZ | 1 | 180 x 80 | 228 x 142 x 35 | 190(+0/-0) x 80(+0/-0) | 1.35 | 214623 |
| CRF 80x200 ANODIZ | 1 | 200 x 80 | 248 x 142 x 35 | 210(+0/-0) x 80(+0/-0) | 1.46 | 214624 |
| CRF 60x90 ANODIZ | 1 | 90 x 60 | 138 x 112 x 35 | 100(+0/-0) x 60(+0/-0) | 0.83 | 214614 |
| CRF 60x120 ANODIZ | 1 | 120 x 60 | 168 x 112 x 35 | 130(+0/-0) x 60(+0/-0) | 0.89 | 214615 |
| CRF 60x160 ANODIZ | 1 | 160 x 60 | 208 x 122 x 35 | 170(+0/-0) x 60(+0/-0) | 1.2 | 214616 |
| CRF 60x180 ANODIZ | 1 | 180 x 60 | 228 x 122 x 35 | 190(+0/-0) x 60(+0/-0) | 1.27 | 214617 |
| CRF 2x60x180 ANODIZ | 2 | 180 x 60 | 428 x 122 x 35 | 190(+0/-0) x 60(+0/-0) | 2.29 | 214618 |
| CRF 80x80 ANODIZ | 1 | 80 x 80 | 128 x 132 x 35 | 90(+0/-0) x 80(+0/-0) | 0.86 | 214619 |
| CRF 80x120 ANODIZ | 1 | 120 x 80 | 168 x 132 x 35 | 130(+0/-0) x 80(+0/-0) | 0.98 | 214620 |
| CRF 2x80x120 ANODIZ | 2 | 120 x 80 | 308 x 132 x 35 | 130(+0/-0) x 80(+0/-0) | 1.61 | 214621 |

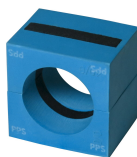


Komponente za brtvljenje

Komponente za brtvljenje



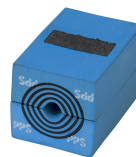
Moduli CRF



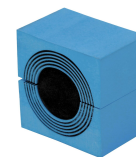
Moduli CRF PPS



Lubricant Blue



Modul CM PPS sa značajkom Multidiameter™



Modul CM sa značajkom Multidiameter™

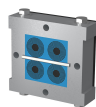


Nivelacijska pločica C

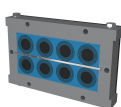
Za detaljne informacije posjetite [roxtec.com](https://www.roxtec.com).

Unaprijed konfigurirani kompleti za prolaze

mm/kg



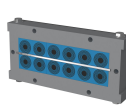
CRF 60x60/4 CM



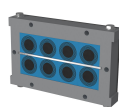
CRF 80x160/8 CM/PPS



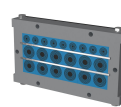
CRF 60x160/12 CM



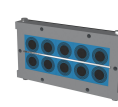
CRF 60x180/12 CM



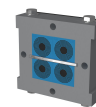
CRF 80x160/8 CM



CRF 80x180/21 CM



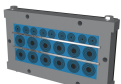
CRF 80x200/10 CM



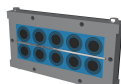
CRF 60x60/4 CM/PPS



CRF 60x120/9 CM/PPS



CRF 80x180/20 CM/PPS



CRF 80x200/10 CM/PPS

| Proizvod | Konfiguracija | Vanjske dimenzije WxHxD | Dimenzije otvora w x h | Težina | Broj artikla |
|----------------------|---|----------------------------|---------------------------|--------|--------------|
| CRF 60x60/4 CM | 4x (10.0-25.0) | 108 x 112 x 35 | 70(+0/-0) x 60(+0/-0) | 0.89 | 215951 |
| CRF 80x160/8 CM/PPS | 4x (21.5-34.5), 4x (21.5-33.5) | 208 x 142 x 35 | 170(+0/-0) x 80(+0/-0) | 1.88 | 215959 |
| CRF 60x160/12 CM | 8x (3.5-16.5), 4x (21.5-34.5) | 208 x 122 x 35 | 170(+0/-0) x 60(+0/-0) | 1.65 | 215952 |
| CRF 60x180/12 CM | 12x (10.0-25.0) | 228 x 122 x 35 | 190(+0/-0) x 60(+0/-0) | 1.78 | 215953 |
| CRF 80x160/8 CM | 8x (21.5-34.5) | 208 x 142 x 35 | 170(+0/-0) x 80(+0/-0) | 1.85 | 215954 |
| CRF 80x180/21 CM | 12x (10.0-25.0), 9x (4.0-14.5) | 228 x 142 x 35 | 190(+0/-0) x 80(+0/-0) | 1.99 | 215955 |
| CRF 80x200/10 CM | 10x (21.5-34.5) | 248 x 142 x 35 | 210(+0/-0) x 80(+0/-0) | 2.17 | 215956 |
| CRF 60x60/4 CM/PPS | 2x (10.0-25.0), 2x (10.0-24.0) | 108 x 112 x 35 | 70(+0/-0) x 60(+0/-0) | 0.9 | 215957 |
| CRF 60x120/9 CM/PPS | 3x (21.5-33.5), 6x (3.5-16.5) | 168 x 112 x 35 | 130(+0/-0) x 60(+0/-0) | 1.19 | 215958 |
| CRF 80x180/20 CM/PPS | 6x (10.0-25.0), 6x (10.0-24.0), 8x (3.5-16.5) | 228 x 142 x 35 | 190(+0/-0) x 80(+0/-0) | 1.99 | 215963 |
| CRF 80x200/10 CM/PPS | 5x (21.5-34.5), 5x (21.5-33.5) | 248 x 142 x 35 | 210(+0/-0) x 80(+0/-0) | 2.13 | 215964 |



The product information provided by Roxtec does not release the purchaser of the Roxtec system, or part thereof, from the obligation to independently determine the suitability of the products for the intended process, installation and/or use.

Roxtec gives no guarantee for the Roxtec system or any part thereof and assumes no liability for any loss or damage whatsoever, whether direct, indirect, consequential, loss of profit or otherwise, occurred or caused by the Roxtec systems or installations containing components not manufactured by an authorized manufacturer and/or occurred or caused by the use of the Roxtec system in a manner or for an application other than for which the Roxtec system was designed or intended.

Roxtec expressly excludes any implied warranties of merchantability and fitness for a particular purpose and all other express or implied representations and warranties provided by statute or common law. User determines suitability of the Roxtec system for intended use and assumes all risk and liability in connection therewith. In no event shall Roxtec be liable for indirect, consequential, punitive, special, exemplary or incidental damages or losses.

The Roxtec products are offered and sold in accordance with the conditions of the Roxtec General Terms of Sales. The latest version of the Roxtec General Terms of Sales can be downloaded from <https://www.roxtec.com/en/about-us/about-roxtec/general-terms-of-sales/>

We reserve the right to make changes to the product and technical information without further notice. Any errors in print or entry are no claims for indemnity. The content of this publication is the property of Roxtec International AB and is protected by copyright.

This document was generated on = 2026-04-29

